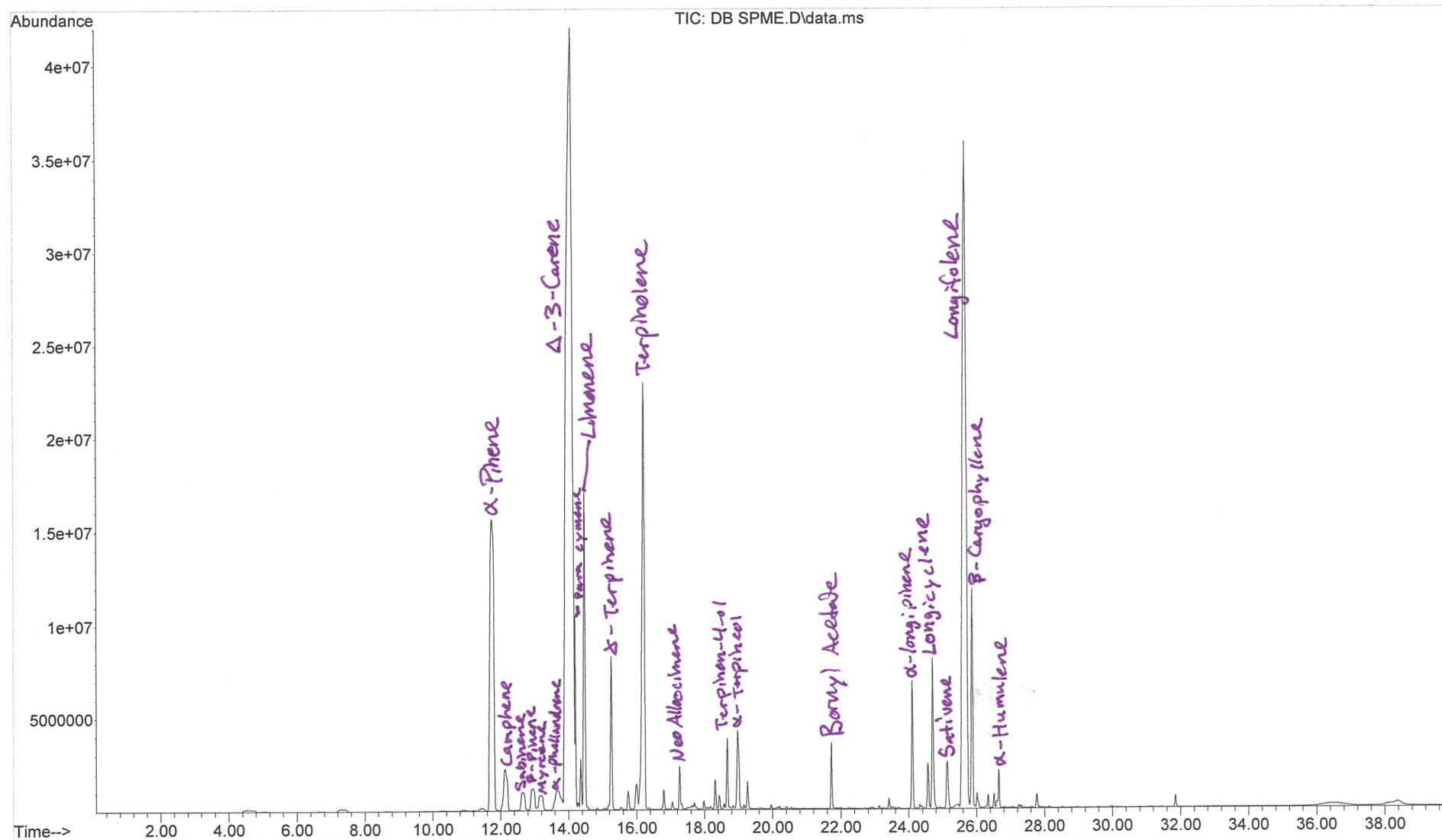


File : C:\msdchem\1\DATA\Suhail 2012\DB SPME.D
 Operator : Brett
 Acquired : 4 Jun 2012 14:33 using AcqMethod RETINDEX SPME SHORT RXI-1MS.M
 Instrument : Instrument 1
 Sample Name: DB SPME
 Misc Info : rxi-1ms 15 min extraction
 Vial Number: 1



Youngliving Essential Oils

Area Percent Report

Data Path : C:\msdchem\1\DATA\Suhail 2012\
 Data File : DB SPME.D
 Acq On : 4 Jun 2012 14:33
 Operator : Brett
 Sample : DB SPME
 Misc : rxi-lms 15 min extraction
 ALS Vial : 1 Sample Multiplier: 1

Integration Parameters: rteint.p

Integrator: RTE
 Smoothing : ON
 Sampling : 5
 Start Thrs: 0.2
 Stop Thrs : 0

Filtering: 5
 Min Area: 25000 Area counts
 Max Peaks: 150
 Peak Location: TOP

If leading or trailing edge < 100 prefer < Baseline drop else tangent >
 Peak separation: 5

Method : C:\MSDCHEM\1\METHODS\ESSOILMSFIDEX.M
 Title :

Signal : TIC: DB SPME.D\data.ms

| peak # | R.T. min | first scan | max scan | last scan | PK TY | peak height | corr. area | corr. % max. | % of total |
|--------|----------|------------|----------|-----------|-------|-------------|------------|--------------|---|
| 1 | 4.532 | 611 | 695 | 746 | rBV | 113392 | 2420639 | 0.46% | 0.173% |
| 2 | 5.120 | 746 | 787 | 821 | rVB | 20783 | 294253 | 0.06% | 0.021% |
| 3 | 5.651 | 861 | 870 | 906 | rVB | 3584 | 36215 | 0.01% | 0.003% |
| 4 | 6.623 | 991 | 1022 | 1076 | rBV | 8903 | 143311 | 0.03% | 0.010% |
| 5 | 7.307 | 1101 | 1129 | 1191 | rBV2 | 140261 | 2186231 | 0.41% | 0.157% |
| 6 | 8.739 | 1291 | 1353 | 1381 | rBV4 | 18590 | 220829 | 0.04% | 0.016% |
| 7 | 9.737 | 1456 | 1509 | 1541 | rBV4 | 7567 | 134273 | 0.03% | 0.010% |
| 8 | 10.312 | 1556 | 1599 | 1626 | rVB9 | 31168 | 325709 | 0.06% | 0.023% |
| 9 | 10.894 | 1666 | 1690 | 1721 | rBV9 | 53937 | 547310 | 0.10% | 0.039% |
| 10 | 11.233 | 1721 | 1743 | 1756 | rVB9 | 25996 | 190605 | 0.04% | 0.014% |
| 11 | 11.431 | 1756 | 1774 | 1796 | rBV5 | 137424 | 1218938 | 0.23% | 0.087% |
| 12 | 11.751 | 1801 | 1824 | 1856 | rVV | 15631376 | 127767861 | 24.11% | 9.150% <i>α-Pinene</i> |
| 13 | 12.134 | 1856 | 1884 | 1916 | rVB2 | 2219587 | 16931796 | 3.19% | 1.213% <i>Camphene</i> |
| 14 | 12.652 | 1931 | 1965 | 1991 | rBV3 | 977008 | 7548235 | 1.42% | 0.541% <i>Sabinene</i> |
| 15 | 12.934 | 1991 | 2009 | 2026 | rVV3 | 1156425 | 8821126 | 1.66% | 0.632% <i>β-Pinene</i> |
| 16 | 13.177 | 2026 | 2047 | 2086 | rVB6 | 800809 | 7253590 | 1.37% | 0.519% <i>Myrcene</i> |
| 17 | 13.669 | 2091 | 2124 | 2146 | rBV4 | 1058075 | 12236503 | 2.31% | 0.876% <i>α-phell</i> |
| 18 | 14.142 | 2146 | 2198 | 2221 | rVV5 | 41977829 | 530030345 | 100.00% | 37.959% <i>Δ-3-Carene + (1% p-cymene)</i> |
| 19 | 14.487 | 2221 | 2252 | 2286 | rVB | 17267086 | 62071571 | 11.71% | 4.445% <i>Limonene</i> |
| 20 | 14.839 | 2291 | 2307 | 2326 | rVB2 | 93483 | 298142 | 0.06% | 0.021% |
| 21 | 15.261 | 2326 | 2373 | 2396 | rBV | 8298984 | 26238023 | 4.95% | 1.879% <i>Terpinene</i> |
| 22 | 15.536 | 2406 | 2416 | 2431 | rBV5 | 131013 | 513670 | 0.10% | 0.037% |
| 23 | 15.747 | 2431 | 2449 | 2466 | rBV | 977805 | 3277756 | 0.62% | 0.235% |
| 24 | 15.996 | 2466 | 2488 | 2496 | rVV2 | 1338983 | 5837122 | 1.10% | 0.418% <i>D-methyl Styrene</i> |
| 25 | 16.239 | 2496 | 2526 | 2541 | rVB | 22894251 | 110194540 | 20.79% | 7.892% <i>Terpinolene</i> |
| 26 | 16.795 | 2596 | 2613 | 2641 | rBV | 1047427 | 2947236 | 0.56% | 0.211% |
| 27 | 17.051 | 2641 | 2653 | 2666 | rVV | 405552 | 1070299 | 0.20% | 0.077% |
| 28 | 17.269 | 2666 | 2687 | 2716 | rVV | 2312599 | 6336187 | 1.20% | 0.454% <i>Neo Alloocimene</i> |
| 29 | 17.703 | 2716 | 2755 | 2786 | rVB8 | 345633 | 2730828 | 0.52% | 0.196% |
| 30 | 17.978 | 2786 | 2798 | 2821 | rBV2 | 448505 | 1587300 | 0.30% | 0.114% |
| 31 | 18.170 | 2821 | 2828 | 2836 | rVV2 | 135238 | 426839 | 0.08% | 0.031% |
| 32 | 18.311 | 2836 | 2850 | 2861 | rVV | 1583008 | 4226359 | 0.80% | 0.303% |
| 33 | 18.439 | 2861 | 2870 | 2881 | rVV3 | 728890 | 2090108 | 0.39% | 0.150% |
| 34 | 18.675 | 2881 | 2907 | 2926 | rVV | 3794444 | 11114825 | 2.10% | 0.796% <i>T-4-ol</i> |

| | | | | | | | | | | |
|----|--------|------|------|------|-------|----------|-----------|--------|---------|-----------------------|
| 35 | 18.982 | 2926 | 2955 | 2976 | rVV4 | 4221100 | 17681128 | 3.34% | 1.266% | <i>α-Terpinol</i> |
| 36 | 19.263 | 2976 | 2999 | 3036 | rVB3 | 1481966 | 4449625 | 0.84% | 0.319% | |
| 37 | 19.654 | 3041 | 3060 | 3091 | rVV3 | 53860 | 531358 | 0.10% | 0.038% | |
| 38 | 19.954 | 3091 | 3107 | 3126 | rVV2 | 225088 | 631417 | 0.12% | 0.045% | |
| 39 | 20.197 | 3126 | 3145 | 3156 | rVB5 | 155772 | 663326 | 0.13% | 0.048% | |
| 40 | 20.408 | 3161 | 3178 | 3191 | rVB6 | 138918 | 467660 | 0.09% | 0.033% | |
| 41 | 20.542 | 3191 | 3199 | 3231 | rBV5 | 85004 | 370730 | 0.07% | 0.027% | |
| 42 | 20.907 | 3236 | 3256 | 3271 | rBV10 | 26308 | 170043 | 0.03% | 0.012% | |
| 43 | 21.067 | 3271 | 3281 | 3296 | rBV10 | 15172 | 70886 | 0.01% | 0.005% | |
| 44 | 21.220 | 3296 | 3305 | 3316 | rVB4 | 46770 | 120193 | 0.02% | 0.009% | |
| 45 | 21.425 | 3316 | 3337 | 3346 | rBV4 | 27536 | 145711 | 0.03% | 0.010% | |
| 46 | 21.725 | 3351 | 3384 | 3416 | rBV | 3562188 | 8589234 | 1.62% | 0.615% | <i>Bornyl Acetate</i> |
| 47 | 21.981 | 3416 | 3424 | 3446 | rVB9 | 75579 | 292014 | 0.06% | 0.021% | |
| 48 | 22.237 | 3446 | 3464 | 3476 | rBV9 | 58925 | 235708 | 0.04% | 0.017% | |
| 49 | 22.697 | 3526 | 3536 | 3551 | rBV3 | 57391 | 189699 | 0.04% | 0.014% | |
| 50 | 22.889 | 3551 | 3566 | 3591 | rVB3 | 79907 | 499627 | 0.09% | 0.036% | |
| 51 | 23.125 | 3591 | 3603 | 3616 | rBV | 171428 | 397764 | 0.08% | 0.028% | |
| 52 | 23.240 | 3616 | 3621 | 3631 | rBV3 | 56668 | 121960 | 0.02% | 0.009% | |
| 53 | 23.413 | 3631 | 3648 | 3661 | rBV | 542351 | 1442490 | 0.27% | 0.103% | |
| 54 | 23.675 | 3681 | 3689 | 3721 | rVB6 | 78756 | 395583 | 0.07% | 0.028% | |
| 55 | 24.116 | 3721 | 3758 | 3771 | rBV | 6929204 | 18675248 | 3.52% | 1.337% | <i>α-longipihene</i> |
| 56 | 24.321 | 3771 | 3790 | 3816 | rVB3 | 229376 | 1005370 | 0.19% | 0.072% | |
| 57 | 24.570 | 3816 | 3829 | 3841 | rBV2 | 2414744 | 7119387 | 1.34% | 0.510% | |
| 58 | 24.717 | 3841 | 3852 | 3871 | rVB | 8122996 | 24615841 | 4.64% | 1.763% | <i>Longicyclene</i> |
| 59 | 24.909 | 3876 | 3882 | 3896 | rVV | 60399 | 344944 | 0.07% | 0.025% | |
| 60 | 25.139 | 3896 | 3918 | 3936 | rVV2 | 2538785 | 10150478 | 1.92% | 0.727% | |
| 61 | 25.734 | 3936 | 4011 | 4021 | rVV2 | 35876020 | 273129817 | 51.53% | 19.561% | <i>Longifolene</i> |
| 62 | 25.881 | 4021 | 4034 | 4046 | rVV | 11834442 | 35347511 | 6.67% | 2.531% | <i>β-Caryo</i> |
| 63 | 26.009 | 4046 | 4054 | 4086 | rVV2 | 830602 | 3017194 | 0.57% | 0.216% | |
| 64 | 26.335 | 4086 | 4105 | 4121 | rVV | 723405 | 1984733 | 0.37% | 0.142% | |
| 65 | 26.514 | 4121 | 4133 | 4141 | rVV2 | 759927 | 1885459 | 0.36% | 0.135% | |
| 66 | 26.655 | 4141 | 4155 | 4176 | rVV | 2059840 | 5984122 | 1.13% | 0.429% | <i>α-Humulene</i> |
| 67 | 26.827 | 4176 | 4182 | 4191 | rVB | 56523 | 131604 | 0.02% | 0.009% | |
| 68 | 27.070 | 4201 | 4220 | 4231 | rVB | 51588 | 326238 | 0.06% | 0.023% | |
| 69 | 27.249 | 4231 | 4248 | 4271 | rBV2 | 176838 | 805444 | 0.15% | 0.058% | |
| 70 | 27.607 | 4291 | 4304 | 4316 | rVB6 | 57622 | 258495 | 0.05% | 0.019% | |
| 71 | 27.774 | 4316 | 4330 | 4371 | rBV3 | 746314 | 2646881 | 0.50% | 0.190% | |
| 72 | 28.138 | 4381 | 4387 | 4416 | rVB3 | 83273 | 265776 | 0.05% | 0.019% | |
| 73 | 28.515 | 4416 | 4446 | 4471 | rVB3 | 41954 | 213772 | 0.04% | 0.015% | |
| 74 | 28.835 | 4471 | 4496 | 4501 | rBV3 | 11556 | 66724 | 0.01% | 0.005% | |
| 75 | 28.963 | 4501 | 4516 | 4536 | rVB4 | 46412 | 146345 | 0.03% | 0.010% | |
| 76 | 29.206 | 4546 | 4554 | 4566 | rVB4 | 14037 | 35041 | 0.01% | 0.003% | |
| 77 | 29.334 | 4566 | 4574 | 4581 | rBV9 | 10600 | 31252 | 0.01% | 0.002% | |
| 78 | 29.583 | 4596 | 4613 | 4641 | rBV8 | 31167 | 106452 | 0.02% | 0.008% | |
| 79 | 29.980 | 4641 | 4675 | 4691 | rBV5 | 83113 | 282400 | 0.05% | 0.020% | |
| 80 | 30.561 | 4756 | 4766 | 4776 | rBV7 | 12598 | 40553 | 0.01% | 0.003% | |
| 81 | 30.792 | 4786 | 4802 | 4836 | rVV7 | 18432 | 119096 | 0.02% | 0.009% | |
| 82 | 31.086 | 4836 | 4848 | 4876 | rVB7 | 31728 | 169854 | 0.03% | 0.012% | |
| 83 | 31.444 | 4881 | 4904 | 4916 | rBV7 | 23972 | 121776 | 0.02% | 0.009% | |
| 84 | 31.853 | 4956 | 4968 | 5011 | rBV2 | 640985 | 1648275 | 0.31% | 0.118% | |
| 85 | 32.537 | 5046 | 5075 | 5086 | rBV2 | 8054 | 68802 | 0.01% | 0.005% | |
| 86 | 32.953 | 5091 | 5140 | 5161 | rVV2 | 16160 | 248906 | 0.05% | 0.018% | |
| 87 | 36.425 | 5576 | 5683 | 5701 | rBV2 | 151927 | 3655306 | 0.69% | 0.262% | |
| 88 | 38.381 | 5916 | 5989 | 6046 | rVB7 | 223302 | 4940523 | 0.93% | 0.354% | |

Sum of corrected areas: 1396324349

Signal : TIC: DB SPME.D\datasim.ms

| peak # | R.T. min | first scan | max scan | last scan | PK TY | peak height | corr. area | corr. % max. | % of total |
|--------|----------|------------|----------|-----------|-------|-------------|------------|--------------|------------|
| 1 | 11.749 | 1792 | 1824 | 1855 | rVB | 11645 | 94973 | 21.90% | 11.749% |
| 2 | 14.146 | 2143 | 2199 | 2224 | rVB5 | 33956 | 433644 | 100.00% | 53.647% |
| 3 | 14.492 | 2224 | 2253 | 2296 | rVB | 11726 | 42136 | 9.72% | 5.213% |
| 4 | 15.265 | 2323 | 2374 | 2404 | rVB | 8810 | 28709 | 6.62% | 3.552% |
| 5 | 16.244 | 2467 | 2527 | 2593 | rVB | 22327 | 134652 | 31.05% | 16.658% |
| 6 | 19.012 | 2926 | 2960 | 2989 | rBV4 | 12867 | 32550 | 7.51% | 4.027% |
| 7 | 25.738 | 3943 | 4012 | 4024 | rBV2 | 5430 | 41665 | 9.61% | 5.154% |

Sum of corrected areas: 808329

Signal : DB SPME.D\FID1A.ch

| peak # | R.T. min | Start min | End min | PK TY | peak height | corr. area | corr. % max. | % of total |
|--------|----------|-----------|---------|-------|-------------|------------|--------------|------------|
| 1 | 7.746 | 7.701 | 7.746 | rBV | 1266 | 1430 | 100.00% | 100.000% |

Sum of corrected areas: 1430

ESSOILMSFIDEX.M Mon Jun 04 15:42:32 2012